



Shivaji Mahavidyalaya, Renapur Dist. Latur

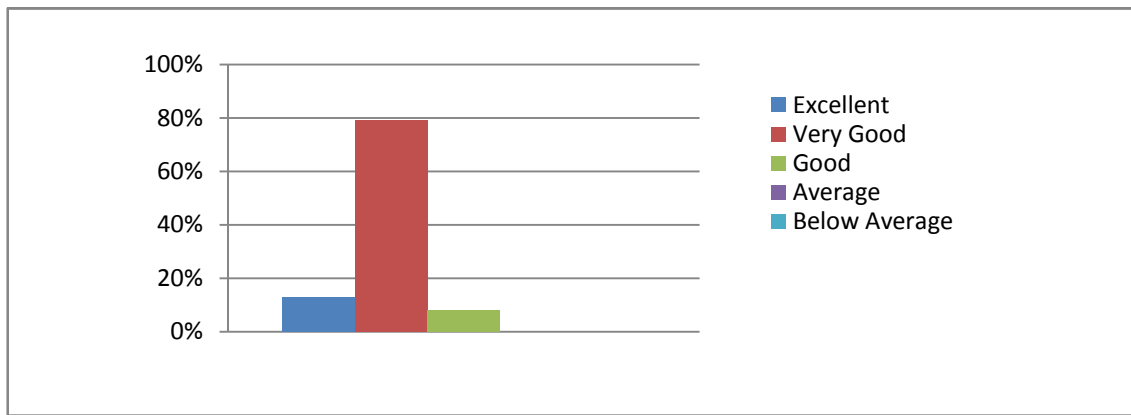
Analysis of the Student Satisfaction Survey 2020-21

The College did Students Satisfaction Survey, in the first week of November 2021 the suggestions and ideas which were communicated by students, kept in IQAC meeting held on 08-11-2021. The feedback were reviewed by IQAC committee and decided to take necessary action on the same.

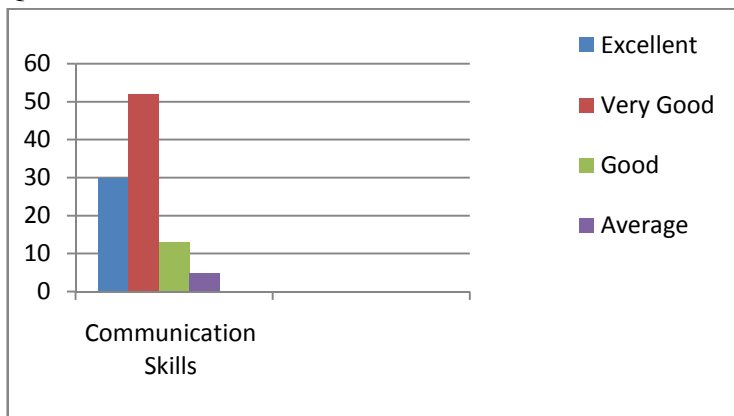
The students gave their suggestion to make the institution a better learning place. The suggestions are:

A. Feedback on Teacher

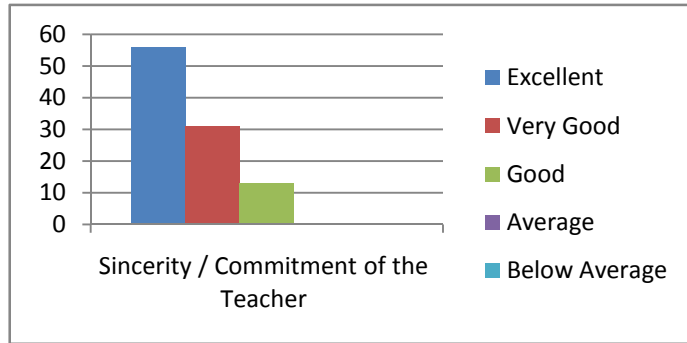
Q1. Knowledge base of the Teacher शिक्षकांचे विषय ज्ञान



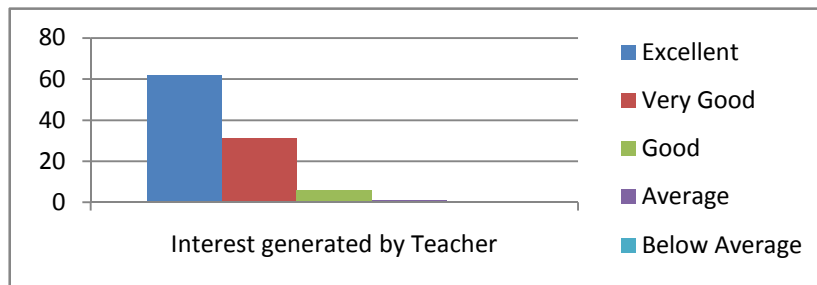
Q2. Communication Skills शिक्षकांचे संभाषण कौशल्य



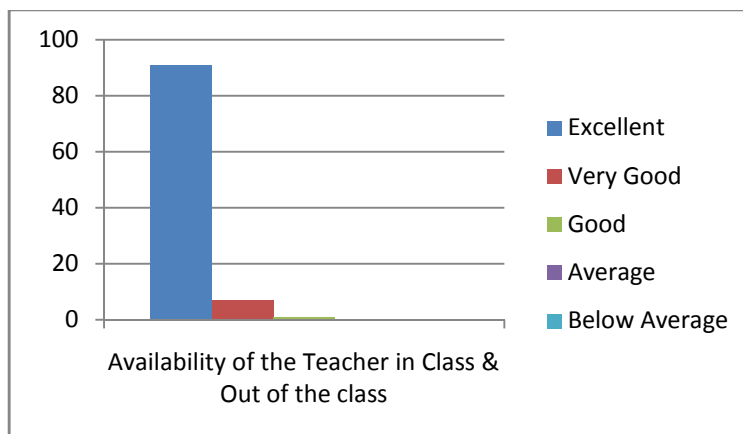
Q3. Sincerity / Commitment of the Teacher शिक्षकाची कार्यतत्परता/ बांधिलकी



Q4. Interest generated by Teacher शिक्षणात आवड निर्माण करण्यासाठीचे शिक्षकांचे प्रयत्न

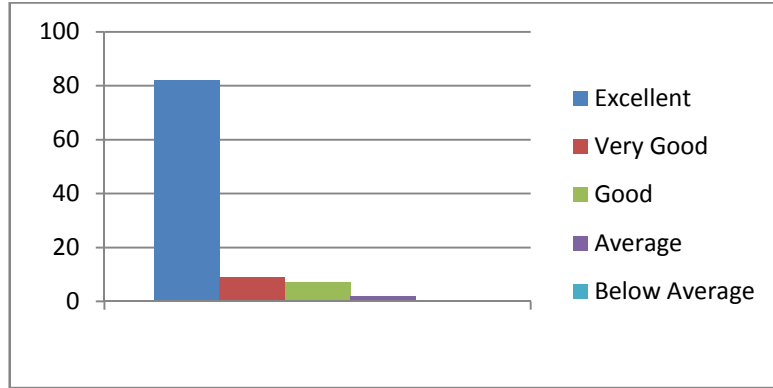


Q5. Availability of the Teacher in Class & Out of the class शिक्षकांची वर्गातील व वर्गाबाहेरील उपलब्धता

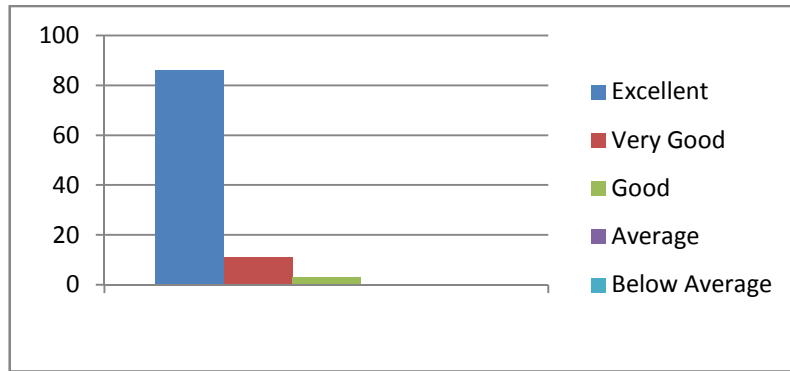


Q6. Ability to design quizzes / tests / assignments / Examinations & projects to evaluate Students understanding of the course.

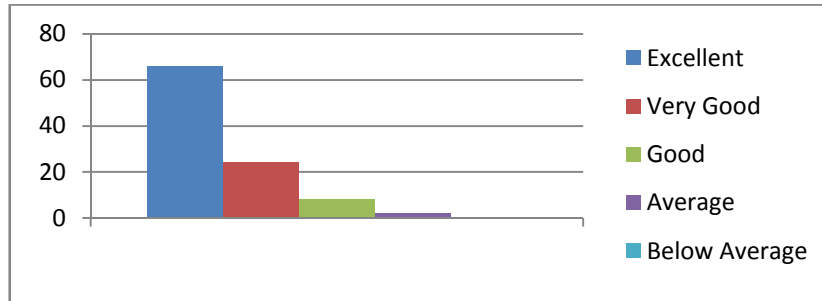
परीक्षा, चाचणी, सेमिनार, स्वाध्याय, प्रकल्प, प्रात्यक्षिके इत्यादी बाबत शिक्षकांचे मार्गदर्शन



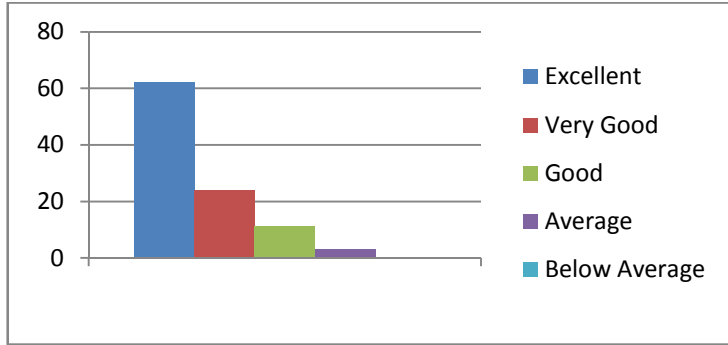
Q7. Syllabus covered in the class शिक्षकांकडून केली जाणारी अभ्यासक्रमाची पूर्तता



Q8. Conduct and Behavior of Teacher शिक्षकांची वागणूक व वर्तणूक

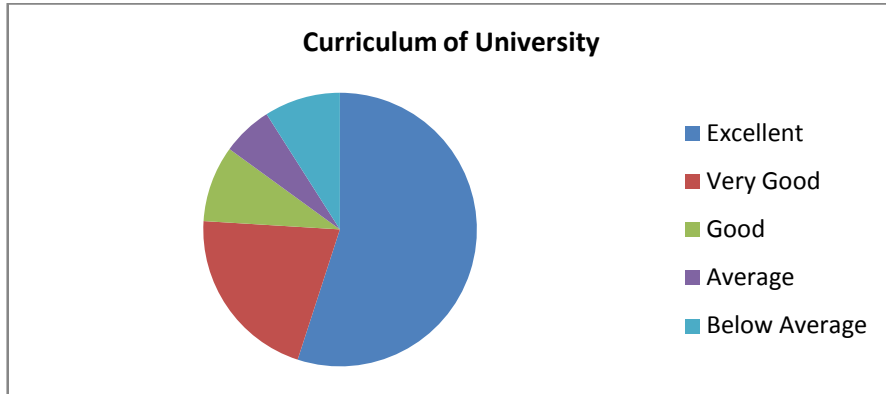


Q9. Overall rating शिक्षकांचेसर्वसाधारण मुल्यांकन



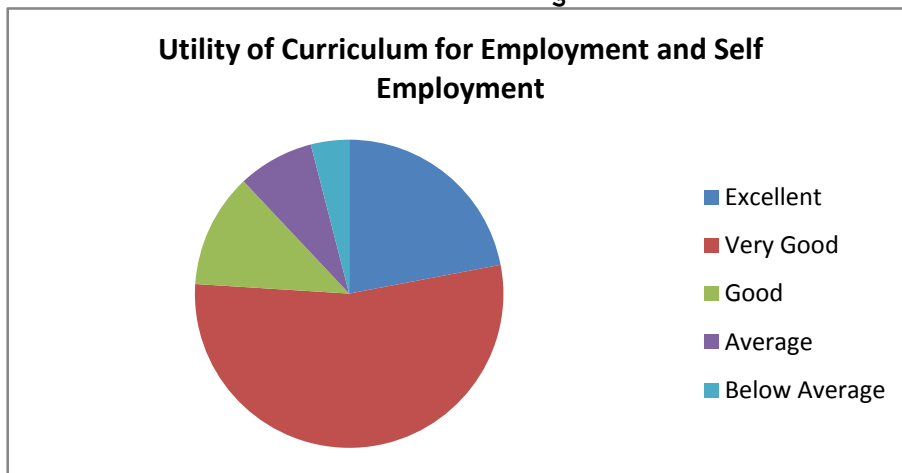
B. Feedback on Curriculum

Q1. Curriculum of University विद्यापीठाचा अभ्यासक्रम

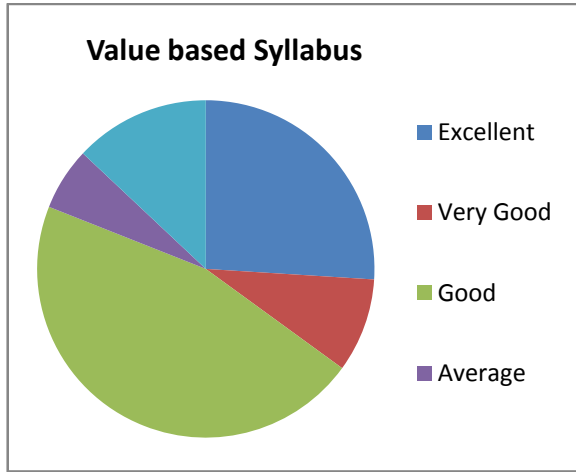


Q2. Utility of Curriculum for Employment and Self Employment

अभ्यासक्रमाची स्वयंरोजगार व रोजगारासाठीची उपयुक्तता

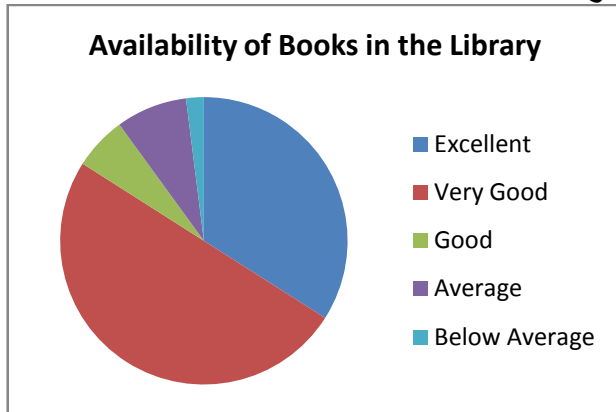


Q3. Value based Syllabus **मुल्याधारीत अभ्यासक्रम**

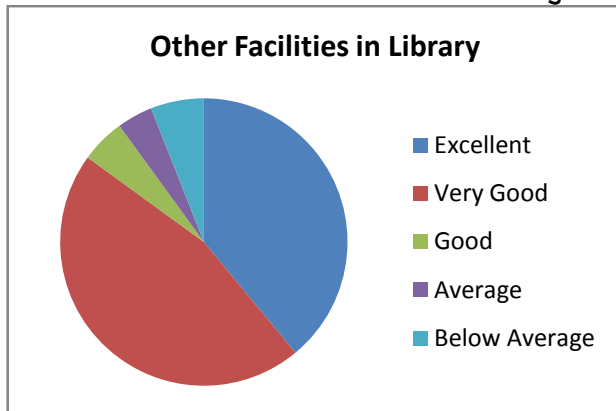


C. Feedback on Facilities

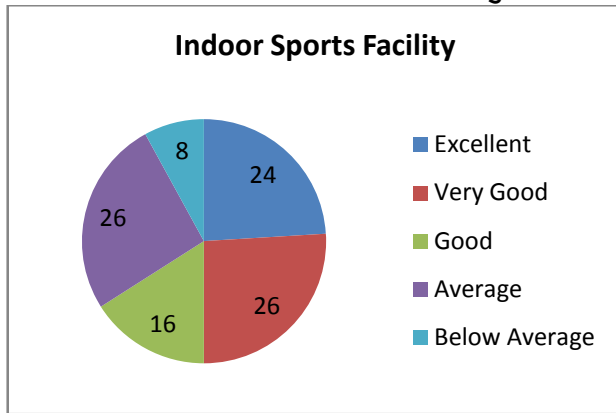
Q1. Availability of Books in the Library **ग्रंथालयातील पुस्तकांची उपलब्धता**



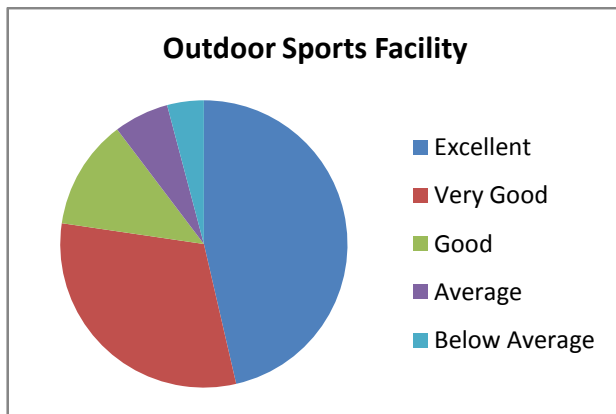
Q2. Other Facilities in Library **ग्रंथालयातील इतर सुविधा**



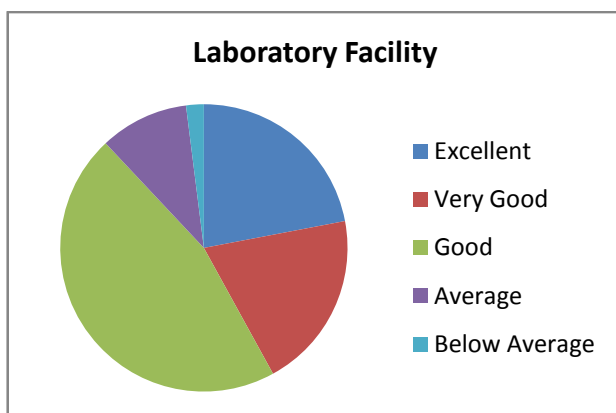
Q3. Indoor Sports Facility इनडोर खेळाची सुविधा



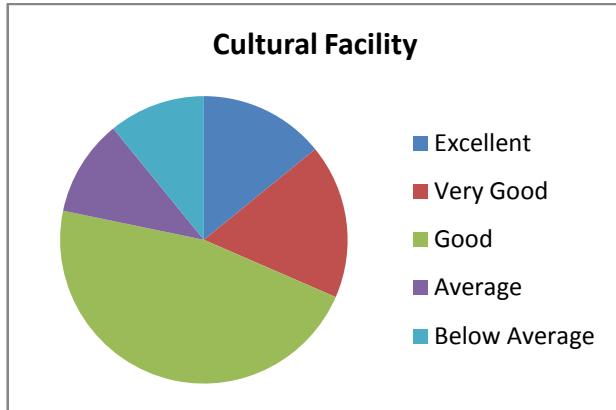
Q4. Outdoor Sports Facility मैदानी खेळाची सुविधा



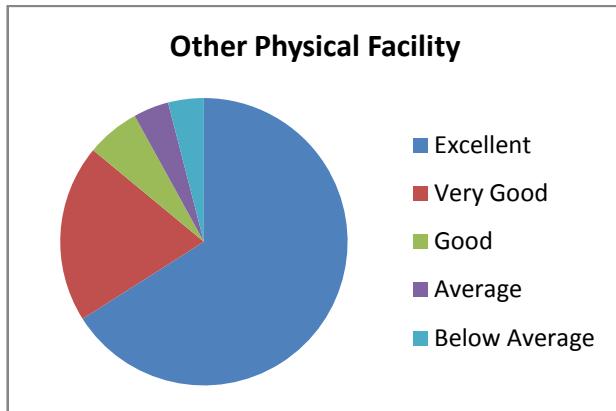
Q5. Laboratory Facility प्रयोगशाळेतील सुविधा



Q6. Cultural Facility सांस्कृतिक सुविधा



Q7. Other Physical Facility इतर भौतिक सुविधा



J.S.P.M. LATUR

Shivaji Mahavidyalaya, Renapur Dist. Latur

Analysis of the Student Satisfaction Survey 2020-21

IQAC discussed student satisfaction survey received from the students and decided to work on the suggestions given by the students. Students and experts are allowed to interact.

1. All suggestions are communicated to all teaching and nonteaching staff and they are asked to take more efforts for students' overall development.
2. Latest Edition books are purchased in the library.
3. Maintained hygiene in Ladies room.
4. Indoor Stadium is kept open in two sessions in the morning and evening.
5. Most of the teachers are using PPT in teaching Learning Process.
6. Personality Development Programs are organized.
7. More guest lectures are arranged in the Academic Year.
8. Teachers have provided more study material to the students.
9. Departmental Library is started by every Department for the students.
10. Teachers are communicated to be audible in the classes.
11. Well equipped laboratory should be developed
12. More cultural activities are arranged in the Academic Year.



Co-Ordinator
IQAC, Shivaji Mahavidyalaya,
Renapur Dist.Latur

IQAC Coordinator



Principal
Shivaji Mahavidyalaya
Renapur Dist. Latur

Principal



Action Taken Report On

Students/ Alumni Feedback with respect to Teachers, Facilities and Curriculum

The feedback of Students and Alumina with respect to Teachers, Facilities and Curriculum has been taken by offline mode.

An analysis of report is carried out on the basis of average percentage of feedback given. The report analyses were discussed in the Staff meeting and accordingly suggestions were called.

The following suggestions were given by staff members in the meeting...

1. The Average percentage of below 60% should be communicated to respective teachers /authority.
2. The teachers should communicate the suggestions given by students/alumina to respective BOS
3. Regarding facilities improvisation, it is to be communicated to management of the College

Co-Ordinator
IQAC, Shivaji Mahavidyalaya,
Renapur Dist.Latur

Principal
Shivaji Mahavidyalaya
Renapur Dist. Latur

Feedback on Teacher 2020-2021

Analysis Report

Report of analysis of feedback on the Teachers received from Students and Alumni. The data was collected using Structured Questionnaire. Students Feedback on the Teachers Feedback regarding Teachers, based on 09 parameters was collected from 164 Final Year students. The results are inferred in terms of percentage based on the responses received from the students and the details of the same are mentioned in the table below.

Sr. No.	Description	(Rating: 5-Excellent, 4-Very Good, 3- Good, 2- Average, 1- Below Average)					Percentage of Excellent, Very Good and Good Response
		1	2	3	4	5	
A	Feedback on Teacher						
1	Knowledge base of the Teacher शिक्षकांचे विषय ज्ञान	0	0	13	130	21	100
2	Communication Skills शिक्षकांचे संभाषण कौशल्य	0	8	21	96	49	95
3	Sincerity / Commitment of the Teacher शिक्षकाची कार्यतत्परता/ बांधिलकी	0	0	21	51	92	100
4	Interest generated by Teacher शिक्षणात आवड निर्माण करण्यासाठीचे शिक्षकांचे प्रयत्न	0	2	10	51	102	99
5	Availability of the Teacher in Class & Out of the class शिक्षकांची वर्गातील व वर्गाबाहेरील उपलब्धता	0	2	2	11	149	99
6	Ability to design quizzes / tests / assignments / Examinations & projects to evaluate Students understanding of the course. परीक्षा, चाचणी, सेमिनार, स्वाध्याय, प्रकल्प, प्रात्यक्षिके इत्यादी बाबत शिक्षकांचे मार्गदर्शन	0	03	11	15	134	98
7	Syllabus covered in the class शिक्षकांकडून केली जाणारी अभ्यासक्रमाची पूर्तता	0	0	5	18	141	100
8	Conduct and Behavior of Teacher शिक्षकांची वागणूक व वर्तणूक	0	3	13	40	108	98
9	Overall rating शिक्षकांचेसर्वसाधारण मुल्यांकन	0	5	18	39	102	97



[Signature]
Principal
Shivaji Mahavidyalaya
Ranapur Dist. Latur

Students Feedback on the Curriculum, based on 03 parameters was collected from 164 Final Year students. The results are inferred in terms of percentage based on the responses received from the students and the details of the same are mentioned in the table below.

B	Feedback on Curriculum	(Rating: 5-Excellent, 4-Very Good, 3- Good, 2- Average, 1- Below Average)					Percentage of Excellent, Very Good and Good Response
		1	2	3	4	5	
1	Curriculum of University विद्यापीठाचा अभ्यासक्रम	15	10	15	34	90	85
2	Utility of Curriculum for Employment and Self Employment अभ्यासक्रमाची स्वयंरोजगार व रोजगारासाठीची उपयुक्तता	7	13	20	88	36	88
3	Value based Syllabus मुल्याधारीत अभ्यासक्रम	21	10	75	15	43	81



[Signature]
Principal
Shivaji Mahavidyalaya
Renapur Dist. Latur

Students Feedback on Facilities, based on 07 parameters was collected from 164 Final Year students. The results are inferred in terms of percentage based on the responses received from the students and the details of the same are mentioned in the table below.

C	Feedback on Facilities	(Rating: 5-Excellent, 4-Very Good, 3- Good, 2- Average, 1- Below Average)					Percentage of Excellent, Very Good and Good Response
		1	2	3	4	5	
1	Availability of Books in the Library ग्रंथालयातील पुस्तकांची उपलब्धता	2	13	10	83	56	90
2	Other Facilities in Library ग्रंथालयातील इतर सुविधा	10	7	8	75	64	90
3	Indoor Sports Facility इनडोअर खेळाची सुविधा	13	43	26	43	39	66
4	Outdoor Sports Facility मैदानी खेळाची सुविधा	11	10	20	49	74	87
5	Laboratory Facility प्रयोगशाळेतील सुविधा	3	16	75	33	37	88
6	Cultural Facility सांस्कृतिक सुविधा	30	16	71	26	21	72
7	Other Physical Facility इतर भौतिक सुविधा	7	7	10	33	107	92



[Signature]
Principal
Shivaji Mahavidyalaya
Renapur Dist. Latur

Report of analysis of feedback on the Curriculum received from Alumni. The data was collected using Structured Questionnaire. Alumni Feedback on the Curriculum based on 08 parameters was collected from 27 Alumni. The results are inferred in terms of percentage based on the responses received from the Alumni and the details of the same are mentioned in the table below.

Feedback from Alumni regarding Curriculum

Sr. No.	Description	(Rating: 5-Excellent, 4-Very Good, 3- Good, 2- Average, 1- Below Average)					Percentage of Excellent, Very Good and Good Response
		1	2	3	4	5	
A	Feedback from Alumni regarding Curriculum						
1	The Syllabus studied by me was relevant to my professional life. मी अभ्यासलेला अभ्यासक्रम व्यावसायिक जीवनाशी संबंधित होता.	2	2	8	10	5	85
2	The contents of the Syllabus were revised at reasonable intervals. अभ्यासक्रमातील मजकूर वाजवी अंतराने सुधारित करण्यात आला.	2	3	5	3	14	81
3	The syllabus imparted value based learning in terms of skills, concepts, knowledge and critical thinking in students. अभ्यासक्रमाने विद्यार्थ्यांमध्ये कौशल्ये, संकल्पना, ज्ञान आणि गंभीर विचार या संदर्भात शिक्षण मूल्य आधारित दिले.	5	8	4	3	7	50
4	Aims and objectives of the syllabus were well defined and clear to the teachers and students. अभ्यासक्रमाची उद्दिष्टे आणि उद्दिष्टे शिक्षक आणि विद्यार्थ्यांना चांगल्या प्रकारे परिभाषित आणि स्पष्ट होती.	1	2	2	14	9	90
5	The course/ syllabus increased my knowledge and understanding of the subject studied. अभ्यासक्रम/अभ्यासक्रमाने अभ्यास केलेल्या विषयाचे माझे ज्ञान आणि आकलन वाढले.	2	1	1	12	11	90
6	The prescribed books were relevant, updated and appropriate. विहित पुस्तके संबंधित, अद्ययावत आणि योग्य होती.	2	7	4	7	7	66
7	The syllabus was directly related to enhancing practical competencies. अभ्यासक्रम प्रत्यक्षपणे व्यावहारिक क्षमता वाढविण्याशी संबंधित होता.	6	9	3	4	5	45
8	The syllabus was need based as per the requirement of the job/industry. अभ्यासक्रम नोकरी/उद्योगाच्या गरजेनुसार आवश्यक होता.	8	11	5	2	1	30



[Signature]
Principal
Shivaji Mahavidyalaya
Renapur Dist. Latir